



## Did you know there is an easier way for you to schedule a delivery? Welcome to AFC Online Account Access!

### What is Online Account Access?

Simply go to the AFC website and click the bright orange "My Account" button.



A secure Online Access page will open up. Have your account number on hand and click the "Sign Up" tab. Then follow the instructions and you will be all set!

Now you can:

- Schedule a Delivery and get Immediate Confirmation.
- Upgrade to Automatic Delivery (...for even more convenience!)
- Pay your bill with a credit card, such as Mastercard or Discover.
- Access Statements.
- View Transaction History.
- Request Service.
- Enroll in one of our many Home Comfort Plans,  
...and much more!

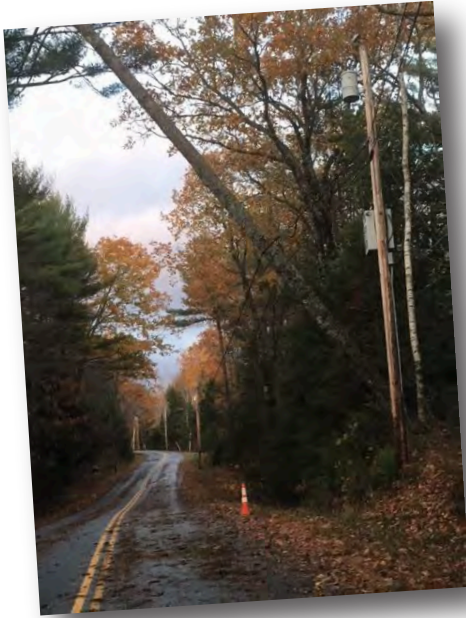
Online Account Access provides all the advantages of doing your everyday AFC related tasks in a simple and easy to use platform, accessible 24 hours a day, 7 days a week!

If you have any questions about setting up your online account, feel free to call 207.623.3851, We can help you with the process.





## Do you have a Whole Home Generator?



We have seen some crazy windy weather lately, and many of us have experienced power outages, sometimes for days!

If you are one of our many customers who used their whole home generators, make sure to check your propane gauge to see how much you used.

If your tank is below 30%, we recommend you call and have your tanks topped off now.

When bad weather is predicted, the increase for fuel requests goes up dramatically. Make sure you are taken care of before the next major weather event.



## Reading Your Propane Tank Percentage Gauge

Use the following chart to read your tank gauge and calculate the gallons of propane remaining.

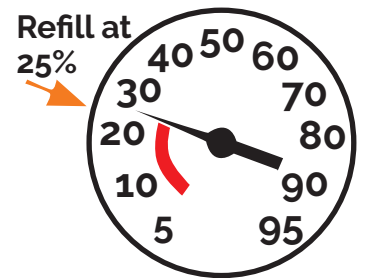
Remember, a tank is filled to a maximum of 80%.

### Number of Gallons Remaining

| Gauge Reading | 120 Gal. Tank | 150 Gal. Tank | 200 Gal. Tank | 250 Gal. Tank | 500 Gal. Tank |
|---------------|---------------|---------------|---------------|---------------|---------------|
| 80% Full      | 96            | 120           | 160           | 200           | 400           |
| 70%           | 84            | 105           | 140           | 175           | 350           |
| 60%           | 72            | 90            | 120           | 150           | 300           |
| 50%           | 60            | 75            | 100           | 125           | 250           |
| 40%           | 48            | 60            | 80            | 100           | 200           |
| 30%           | 36            | 45            | 60            | 75            | 150           |

**IMPORTANT:** Order more gas before your tank gauge reads below 25%.

|     |    |    |    |    |     |
|-----|----|----|----|----|-----|
| 20% | 24 | 30 | 40 | 50 | 100 |
| 10% | 12 | 15 | 20 | 25 | 50  |



Gauge is located under tank dome.

We hope you, your family and friends had a wonderful Thanksgiving. All of us at AFC, J&S Home Heating and Weymouth Fuel are thankful for all of you, our customers.